

JETMASTER[®]

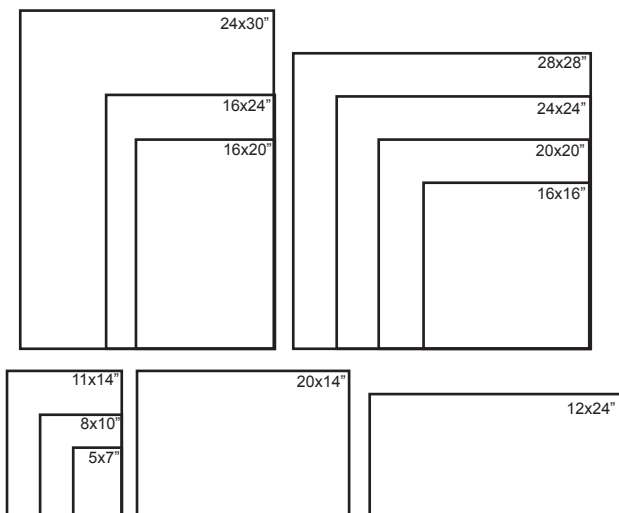
PHOTO PANEL

Print - Stick - Display

The **JetMaster Photo Panel** creates effortless impact for your images. A lightweight alternative to solid MDF display blocks, this photo mount has a pressure sensitive adhesive face and is available in a range of sizes with a choice of two smart matte edge finishes. JetMaster Photo Panels are simple to create and can be wall mounted or used as an attractive addition to any desk.

- Stylish frame free photo mount
- Choice of black or white matte edge finish
- Permanent pressure sensitive adhesive

Print Size (Inches)	Depth		Printer Type	Finished face size (Inches)	Quantity Per Box
	mm	inches			
5x7	25	1	Desktop	4.7x6.7	10
8x10	25	1	Pro Desktop	7.7x9.7	10
11x14	25	1	Pro Desktop	10.7x13.7	10
12x12	25	1	17" roll/ A3+ sheet fed	11.75x11.75	8
16x16	25	1	17" roll/ A2 sheet fed	15.75x15.75	8
16x20	25	1	17" roll/ A2 sheet fed	15.75x19.7	8
16x24	25	1	17" roll/ A2 sheet fed	15.75x23.6	8
12x24	25	1	17" roll/ A2 sheet fed	11.8x23.6	8
20x20	25	1	24" roll/ A1 sheet fed	19.7x19.7	8
20x14	25	1	17" roll/ A2 sheet fed	19.7x13.8	8
24x24	25	1	24" roll/ A1 sheet fed	23.6x23.6	8
28x28	25	1	36" roll/ A1 sheet fed	27.6x27.6	5
24x30	25	1	36" roll/ A1 sheet fed	23.6x31.5	5



All sizes are available with a choice of Black or White edge finishes.

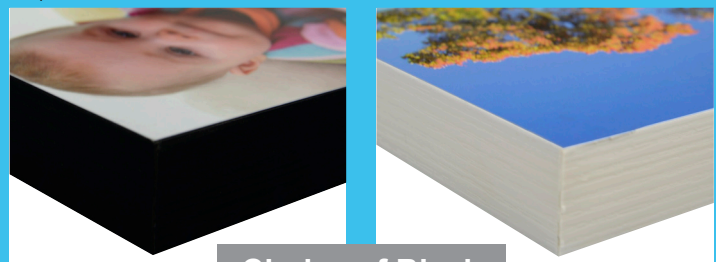
Custom sizes and edge finishes available on request subject to quantity.



The JetMaster Image Display Systems Range is manufactured and distributed by Innova Art. For more information about Innova and their range of digital media visit www.innovaart.com



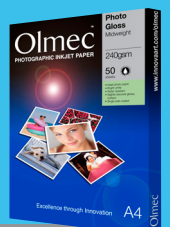
Tabletop or Wall Mounted



Choice of Black or White Edging

JetMaster Photo Panels look great when used with Olmec Photographic Papers - Also available from Innova Art

www.innovaart.com



JetMaster Photo Panel Available From:

www.jetmaster-systems.com

+44 (0) 1992 571775 | info@jetmaster-systems.com | +1 856-456-3200

JETMASTER[®]

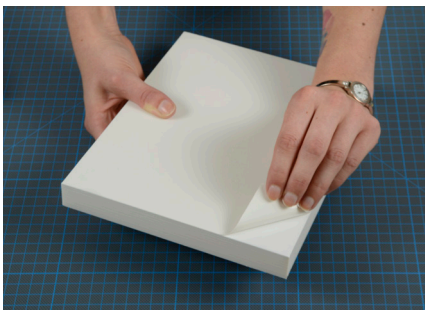
PHOTO PANEL

Search *JetMaster Systems* on YouTube to watch the video

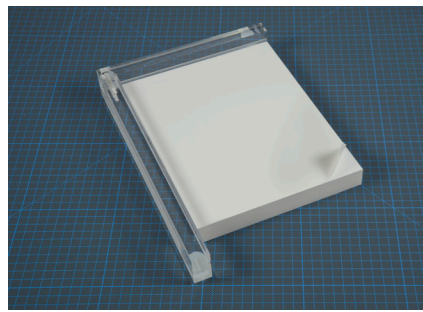
Print - Stick - Display

Assembly Instructions

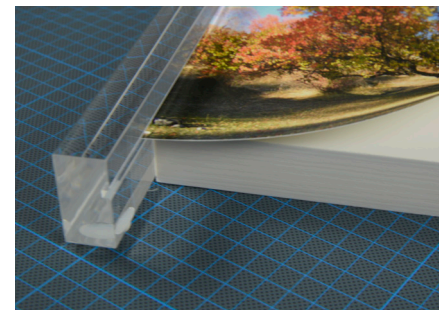
To get the best results print your image to the size specified in the print size column of the table on the previous page. Experiment with a range of finishes on the face of your photo panel by printing your image on different medias.



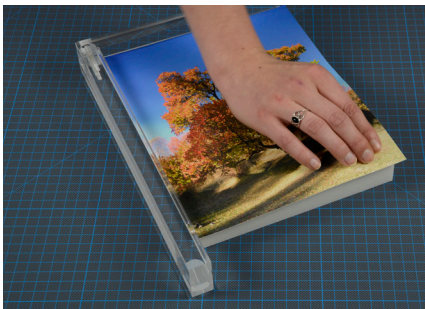
Step 1:
Peel back a small section of the release liner.



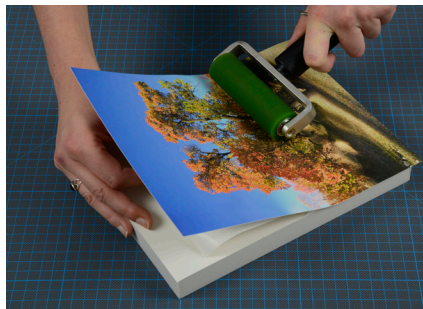
Step 2:
Place the photo panel into the alignment frame and fold back part of the release liner



Step 3:
Position your image using the alignment frame.



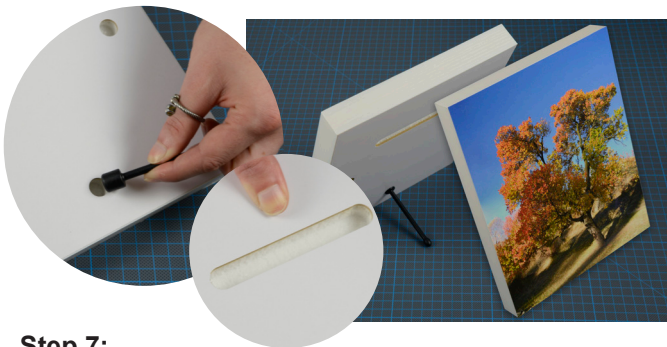
Step 4:
Secure a corner of your print using the area of adhesive you exposed earlier



Step 5:
Remove the rest of the release liner and apply even pressure using a roller.



Step 6:
Place your photo panel face down on a cutting mat and use a rotary cutter or craft knife to remove the excess paper from the edges.



Step 7:
Insert the desk stand into one of the pre drilled holes on smaller frames or use the slits on the back of larger frames to display your finished photo panel



JetMaster Photo Panel Tools

Cutting Mats, Alignment Tools and Rollers are all available from JetMaster Display Systems, contact us for further details. Rotary Cutters and Craft Knives are available separately.

www.jetmaster-systems.com

+44 (0) 1992 571775 | info@jetmaster-systems.com | +1 856-456-3200